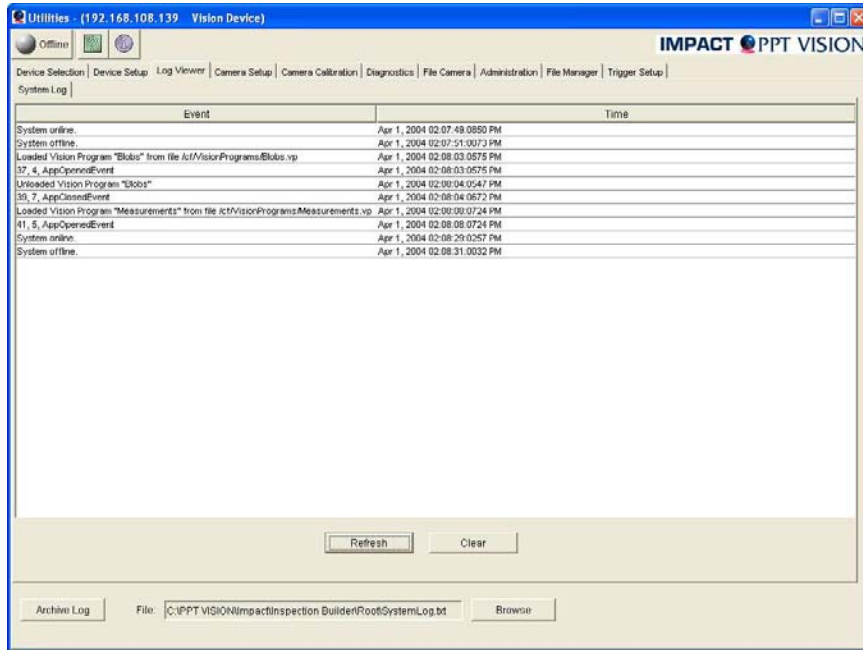


System Event Log in Utilities



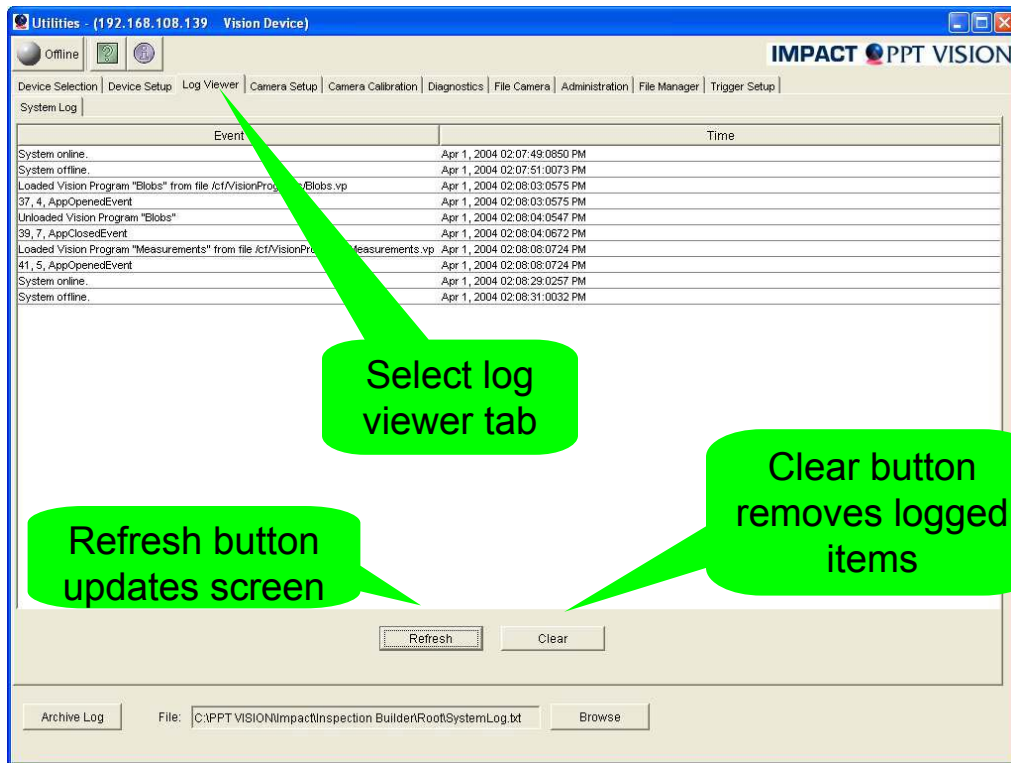
This training module will cover the System Event Log in Utilities

System Event Log

The Purpose of this training is to demonstrate how the System Event Log works in Utilities. The System Event Log is part of Utilities and is located in the Tab called "Log Viewer"

The Log Viewer tab is used to view and save the System Log. Entries in the System log are time and date stamped and stored on the vision device.

Open Utilities



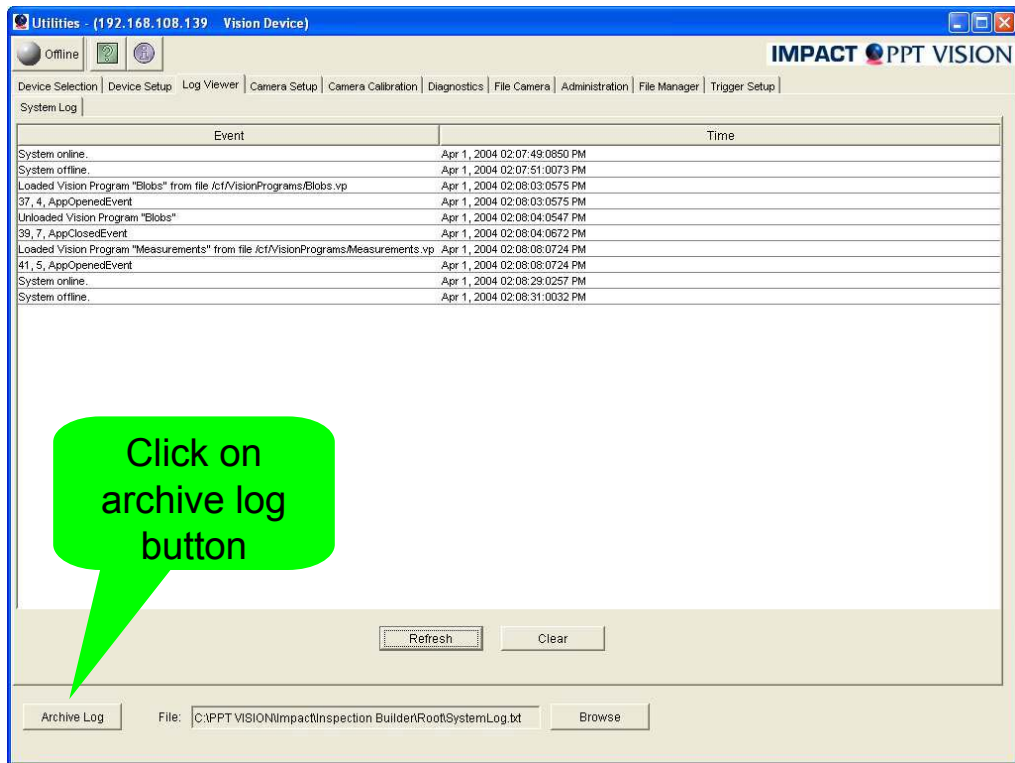
Open Utilities

Follow these steps

1. Double click on the Utilities Icon
2. Select your IP address to connect to.
3. Click on the tab "Log Viewer"

Since the log entries are stored on the vision device, you will need to click Refresh whenever you want to update the displayed list of entries on the client computer.

Save System Log to Text File



Save System Log to Text File

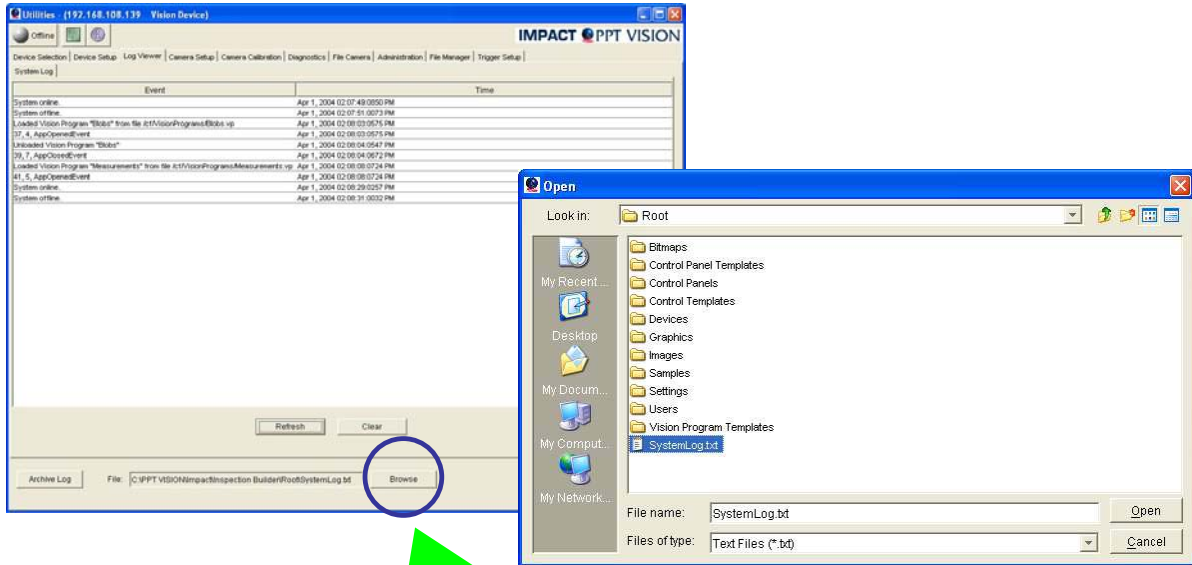
Follow these steps

1. Click on the Archive button to save the system log to a text file.

System Log Entries

The listings are sorted in ascending time order and contain information about the vision device and tasks such as online and offline events, system restarts, vision device and image acquisition errors, trigger overruns, tool failures, and other types of system events and failures.

Log Viewer Text File



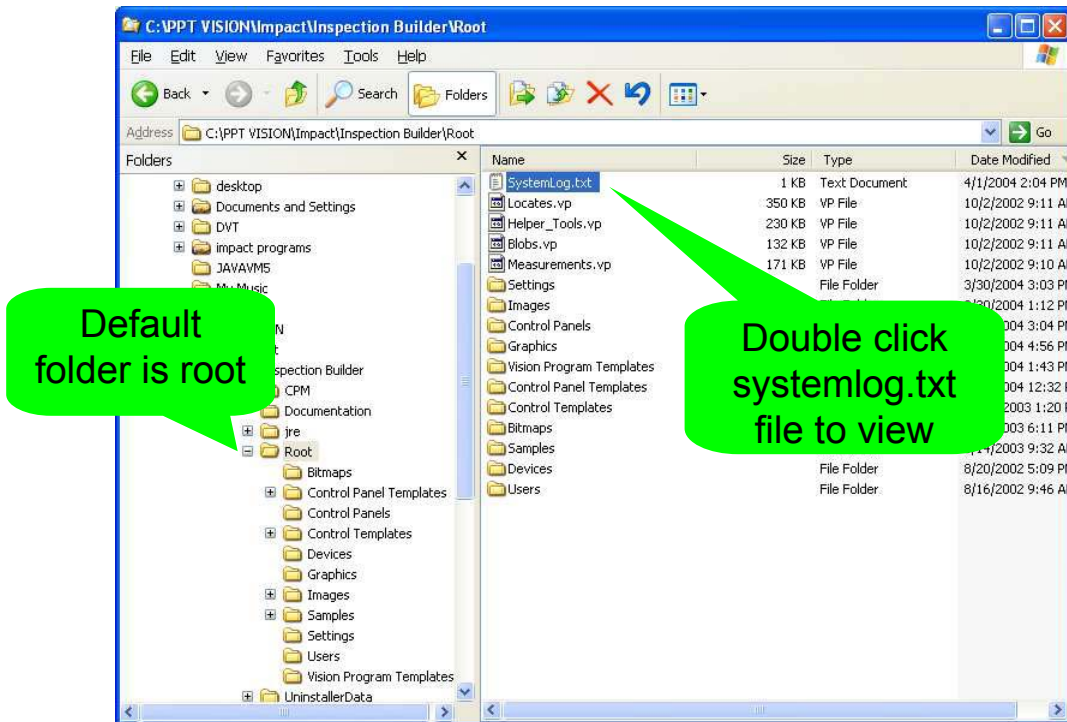
Click on browse to change
file name or folder

Text File

To change the folder, follow these steps;

1. To change the default folder to save the "systemlog.txt" file, click on the button called "browse"
2. Select the folder to save to.

Open systemlog.txt file

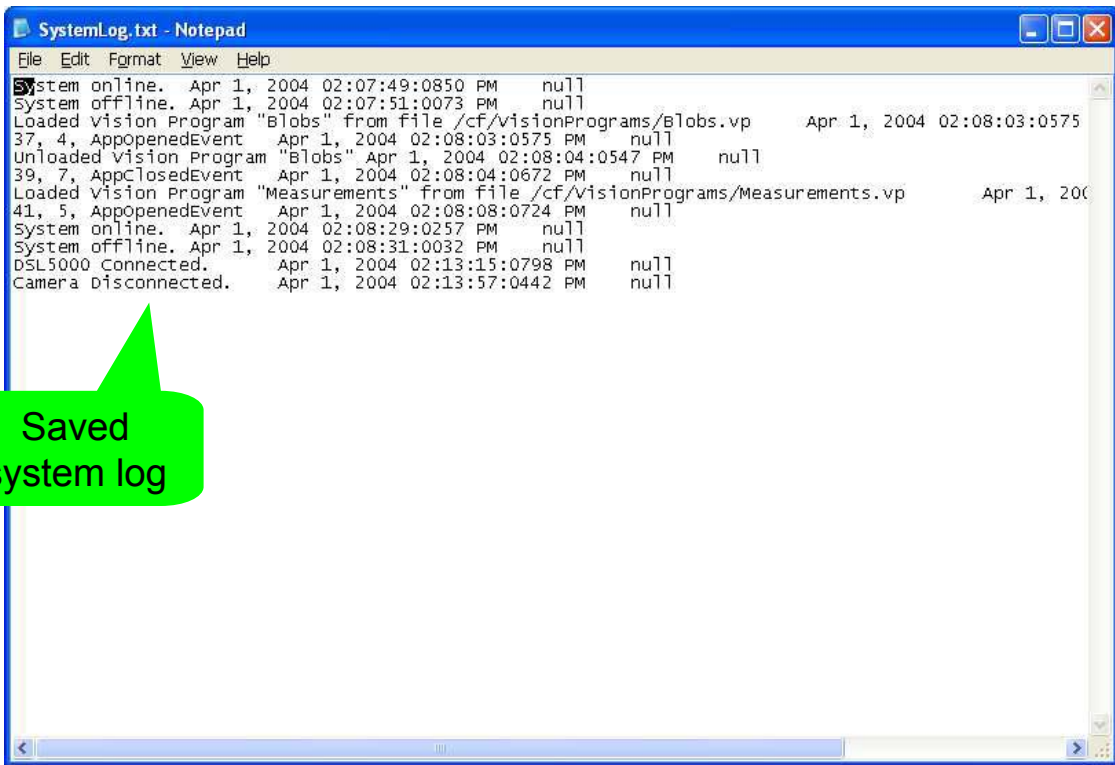


Open systemlog.txt file

Follow these steps

1. Open windows explorer
2. Go to the folder its saved in. The default is
C:\PPT VISION\Impact\Inspection Builder\Root\SystemLog.txt
3. Double click on the file to open it.

View systemlog.txt file



```
SystemLog.txt - Notepad
File Edit Format View Help
System online. Apr 1, 2004 02:07:49:0850 PM null
System offline. Apr 1, 2004 02:07:51:0073 PM null
Loaded Vision Program "Blobs" from file /cf/VisionPrograms/Blobs.vp Apr 1, 2004 02:08:03:0575
37, 4, AppopenedEvent Apr 1, 2004 02:08:03:0575 PM null
Unloaded Vision Program "Blobs" Apr 1, 2004 02:08:04:0547 PM null
39, 7, AppclosedEvent Apr 1, 2004 02:08:04:0672 PM null
Loaded Vision Program "Measurements" from file /cf/VisionPrograms/Measurements.vp Apr 1, 2004 02:08:08:0724 PM null
41, 5, AppopenedEvent Apr 1, 2004 02:08:08:0724 PM null
System online. Apr 1, 2004 02:08:29:0257 PM null
System offline. Apr 1, 2004 02:08:31:0032 PM null
DSL5000 connected. Apr 1, 2004 02:13:15:0798 PM null
Camera Disconnected. Apr 1, 2004 02:13:57:0442 PM null
```

Saved system log

View systemlog.txt file

The systemlog.txt file will show all the system events logged and saved to the file. In this example the bottom 2 lines show the camera was connected and disconnect. It also shows the date and times these events happened.