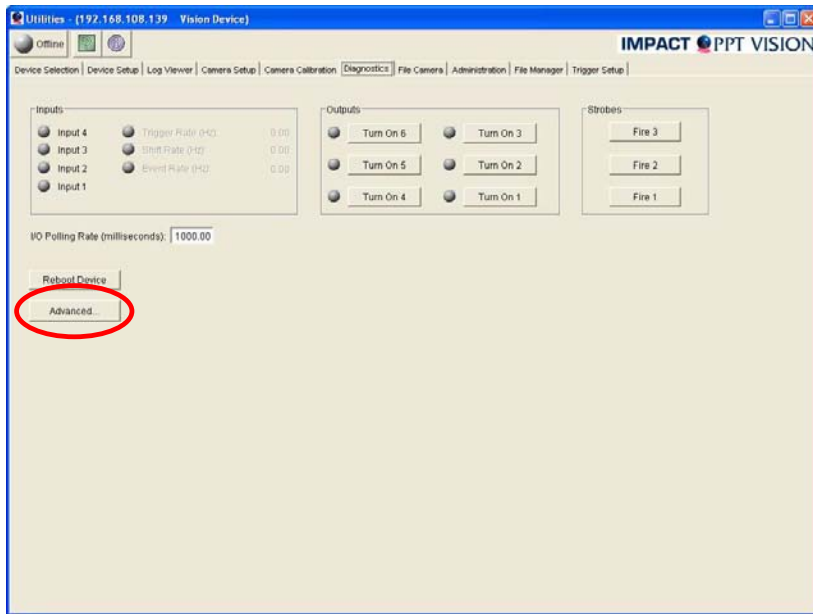


Calibration Editor



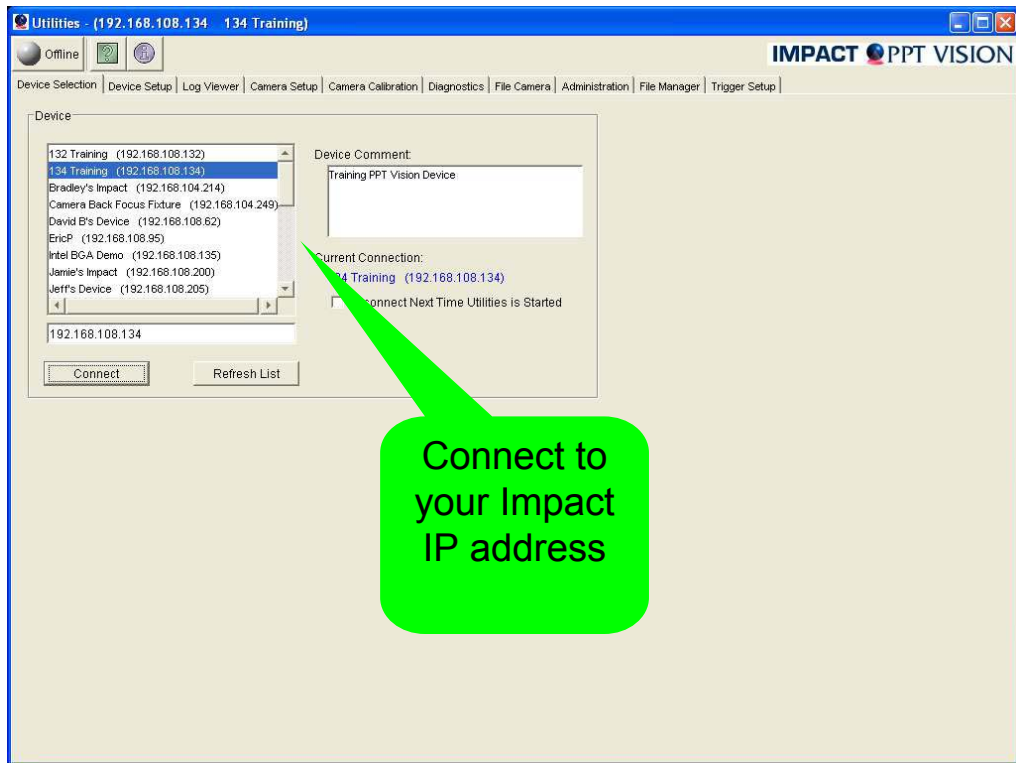
This training module will cover the following

- How to use Calibration Editor in Utilities

Calibration Editor in Utilities

The Purpose of this training is to demonstrate the Calibration Editor feature in Utilities. The Calibration editor is used to manually calibrate an image by assigning a calibration factor to the image and saving the image file with the units per pixel.

Open Utilities

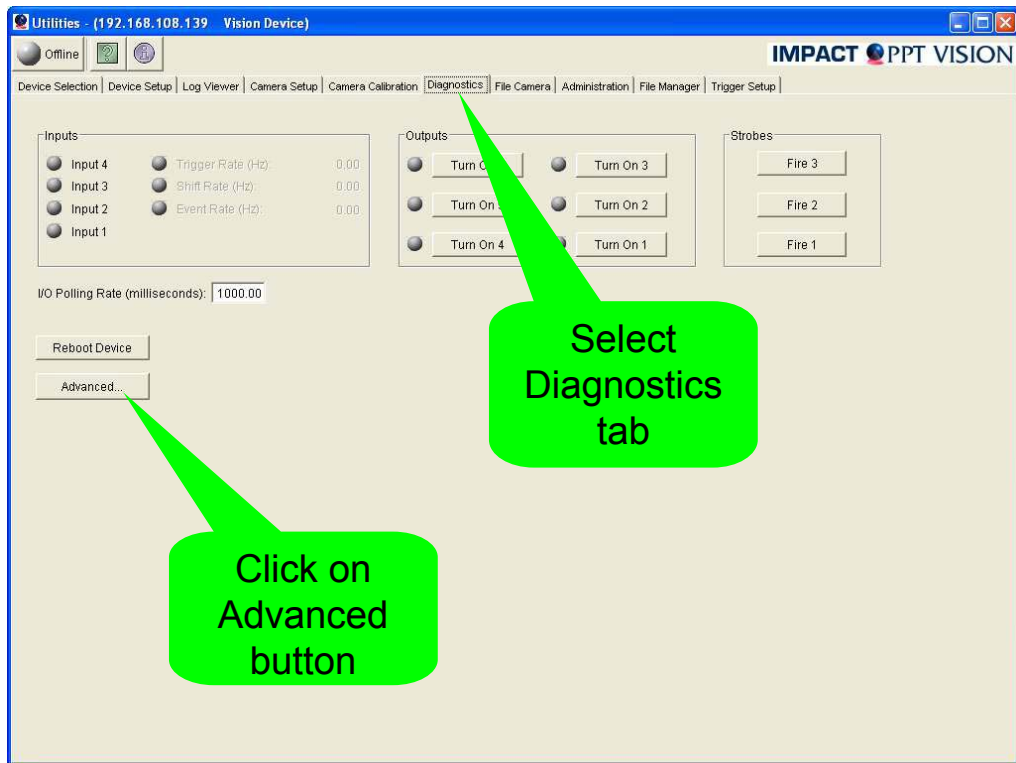


Open Utilities

Follow these steps

1. Open Utilities by double clicking on the Utility Icon on windows desktop.
2. Select your Impact device to connect to and click on Connect button.
3. Select the Diagnostics tab on top.

Diagnostics tab



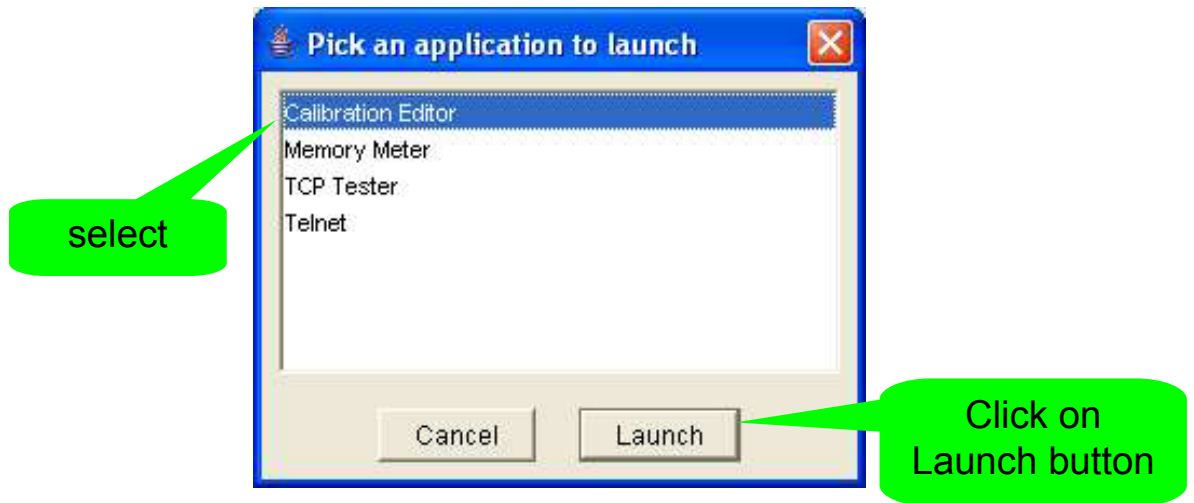
Diagnostics tab

The diagnostics tab has a advanced button. The advance button has advanced features that include the Calibration editor.

Follow these steps

1. Click on the Diagnostics tab on top.
2. Click on the Advanced button.

Open Calibration Editor

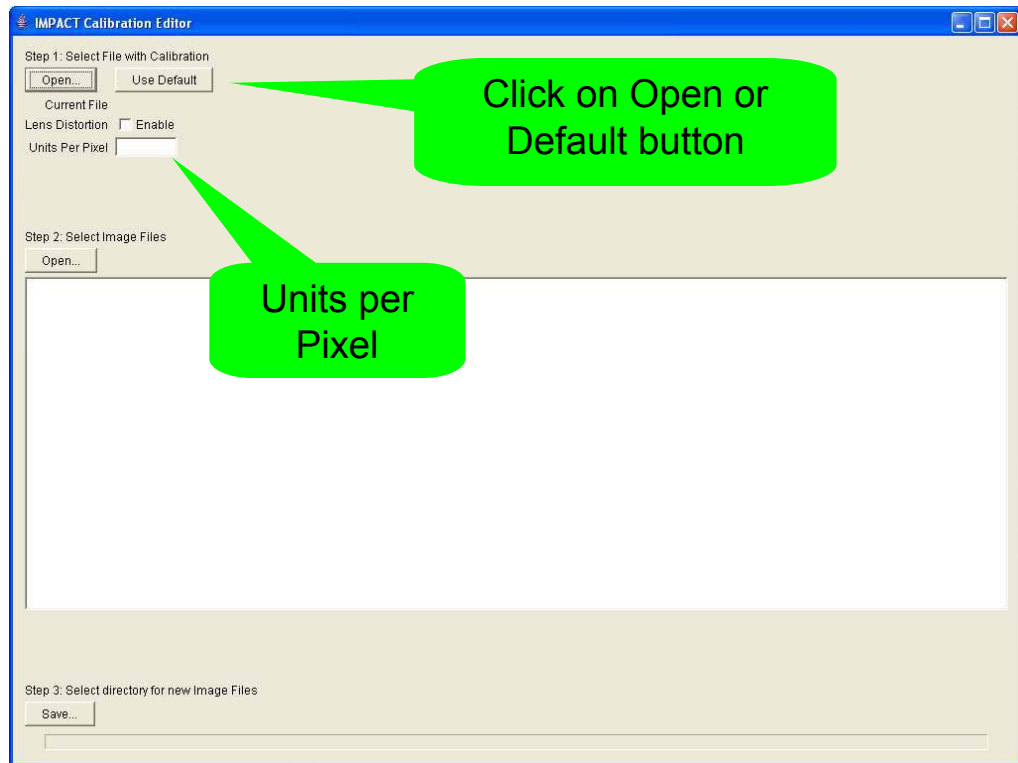


Open Calibration editor

Follow these steps;

1. Select the Calibration editor
2. Click on the Launch button.

Calibration Editor Step 1



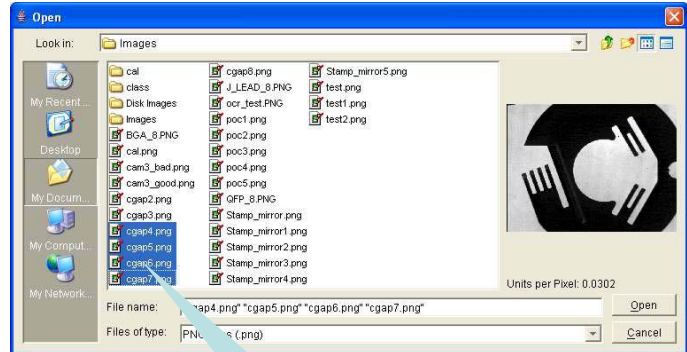
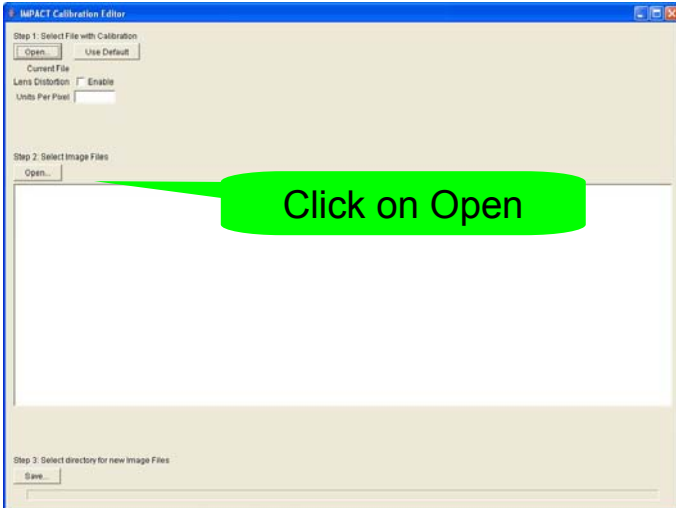
Calibration Editor step 1

Step 1 is used to select file with calibration. Use the Open button to copy the calibration from a image saved. Use the Default button to enter your own units per pixel. The lens distortion can be enabled by clicking the enable box. Lens distortion if enabled with automatically adjust pixel size evenly across the image window. Lens distortion is caused by the camera lens and usually the outer edges will be distorted.

Follow these steps

1. Select the default button or the open button
2. If you open a image, the units per pixel will appear in the dialog box
3. If you use the default, you need to enter a unit per pixel in the dialog box.
4. Click the enable box for Lens Distortion if you want to use it.

Calibration Editor Step 2



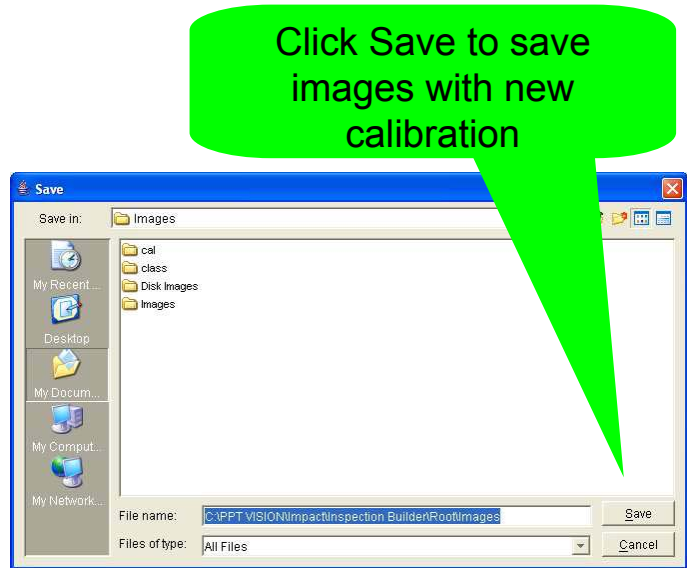
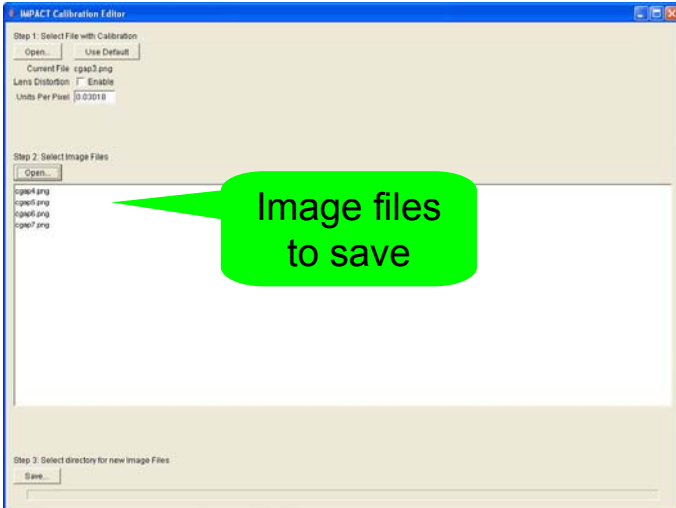
Calibration editor step 2

Step 2 is used to select the image files to manually calibrate.

Follow these steps.

1. Click on the Open button.
2. Select the images you want to calibrate.
3. Click on the open button
4. The images names will be listed in the dialog box.

Calibration Editor Step 3



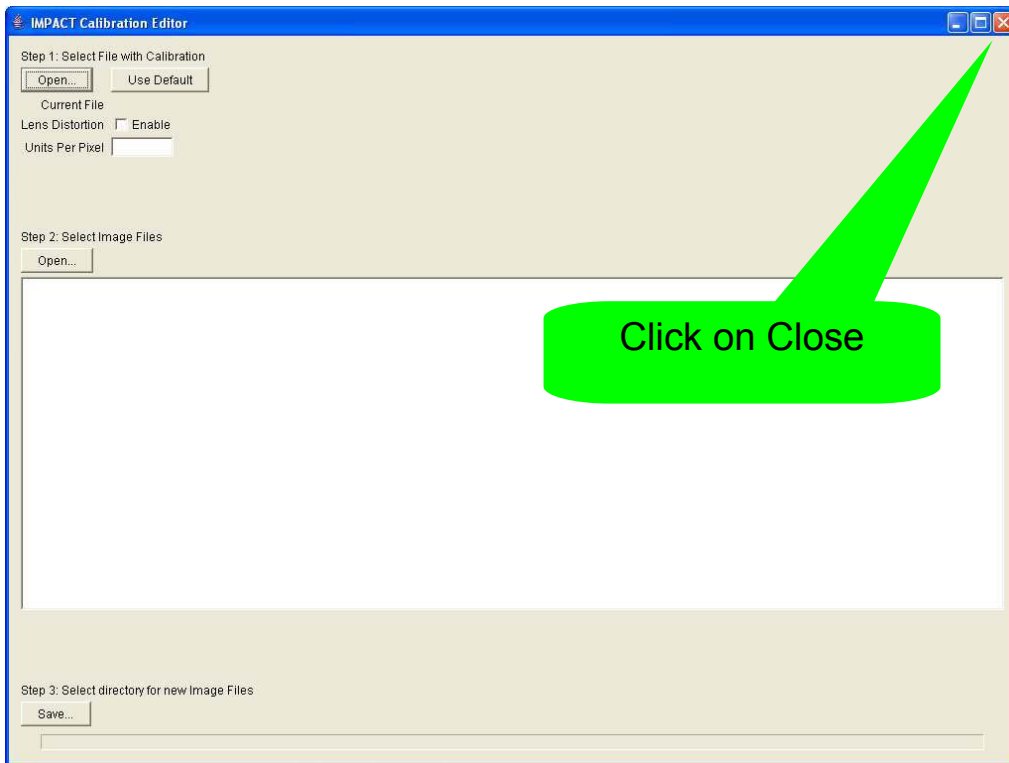
Calibrate Editor step 3

Step 3 is used to save the new calibration factor to the images you have selected.

Follow these steps

1. Click on the save button.
2. Select the folder to save in.
3. Click on the Save Button.
4. The images are now saved with the calibration factor.

Close Calibration Editor



Close the Calibration Editor

Close the Calibration Editor by clicking on the X.

The images you saved are now ready to use and can be loaded and viewed by selecting the File Camera Tab in Utilities.