

# Impact Training

- Setup Windows XP for Impact connection



## **Setup Windows XP for Impact Connection**

This training section will demonstrate how to configure your PC using windows XP. This is the first step that must be done. After the network connection has been established, then Inspection builder software can be installed.

# Ethernet Connections



## Ethernet Connections

The connection between the Impact and your PC requires an Ethernet cable.

1. To make a direct connection to the Impact, plug one end of the cable into Ethernet1 port on the Impact.
2. The other end of the cable plugs into the Ethernet port on your PC

# Direct Connection



## Impact Default settings

**IP Address 192.168.0.128**

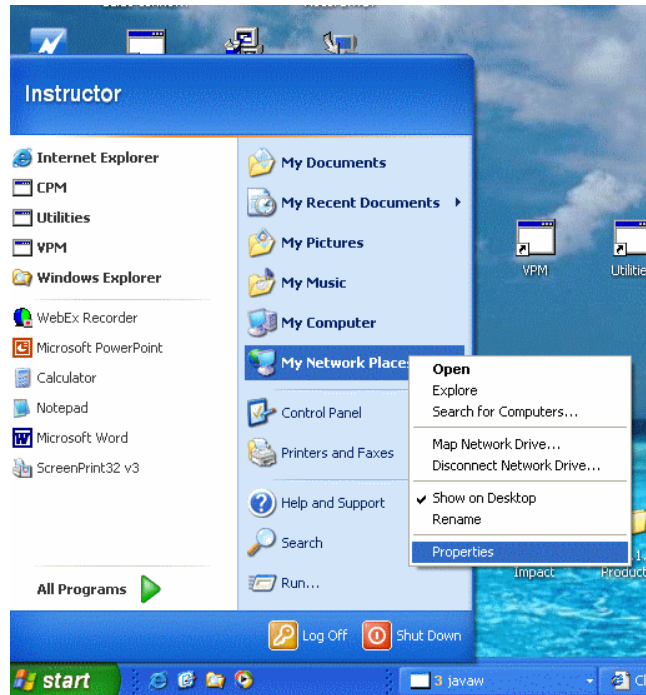
**Mask 255.255.255.0**

### Direct Connection

Now we can setup the PC to make the connection to your Impact. The local area connection on the PC must be configured to connect to the Impacts default IP address. The default IP address for the Impact is 192.168.0.128 and the mask is 255.255.255.0

# My Network Places

- Click on Start Menu
- Right click on My Network
- Select Properties
- Note, My Network Places can also be found in the Control Panel



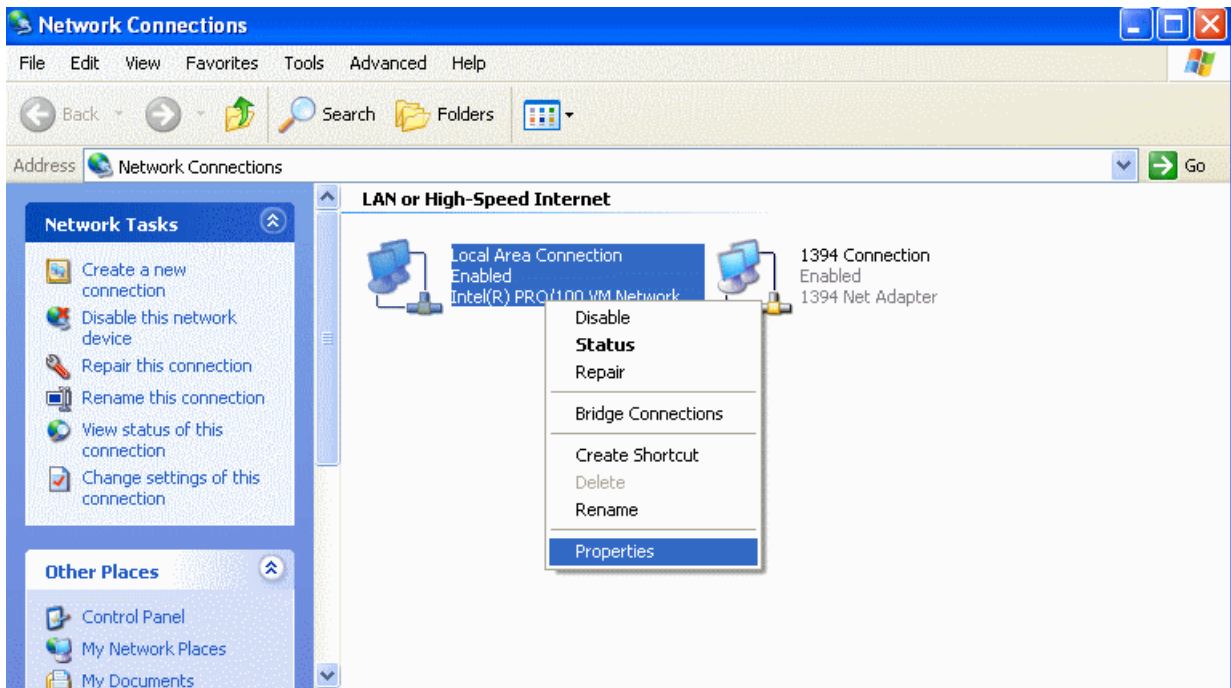
## My Network Places

To setup the IP address for your PC, follow the instructions below.

1. Go to the Windows start menu.
2. Find My Network Places
3. Right click and select properties.

This will open up the network connections window.  
(Network connections can also be found in the Control Panel.)

# Network Connections



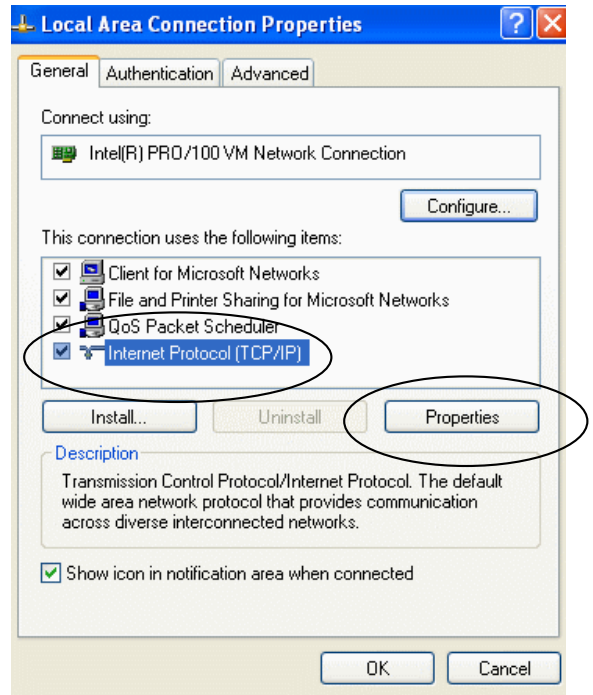
- Right click on Local Area Connection
- Select Properties

## Network Connections

1. Right click on the Icon that says Local Area Connection
2. Select properties.

# Local Area Connection Properties

- Select Internet Protocol
- Click on Properties

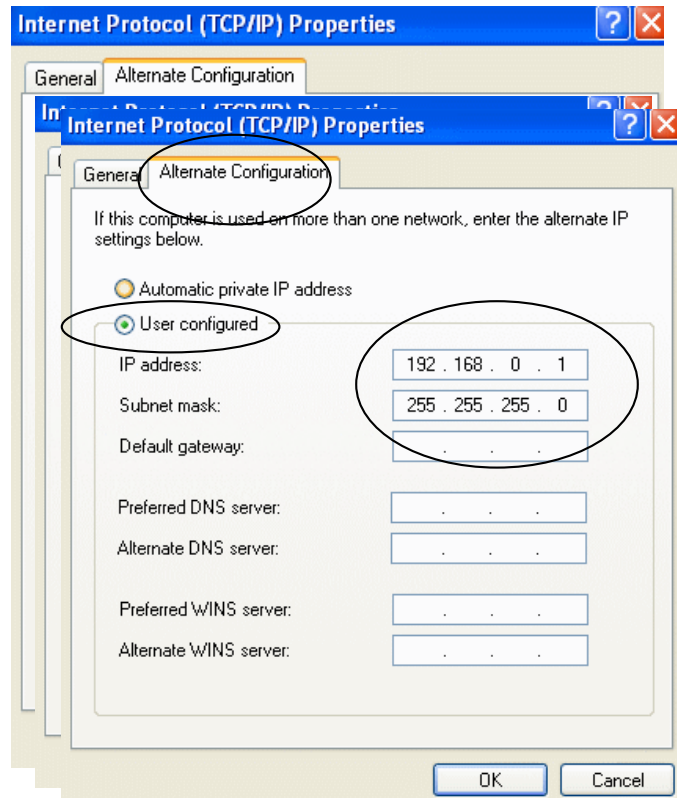


## Local Area Connection Properties

1. Select the General tab on the Local Area Connection Properties window.
2. Select the Internet Protocol (TCP/IP)
3. Click on properties.

# IP Address

- Select Alternate Configuration Tab
- Select User Configured
- Enter the IP Address, 192.168.0.1
- (the last digit can be any number except 128)
- Enter the Subnet Mask

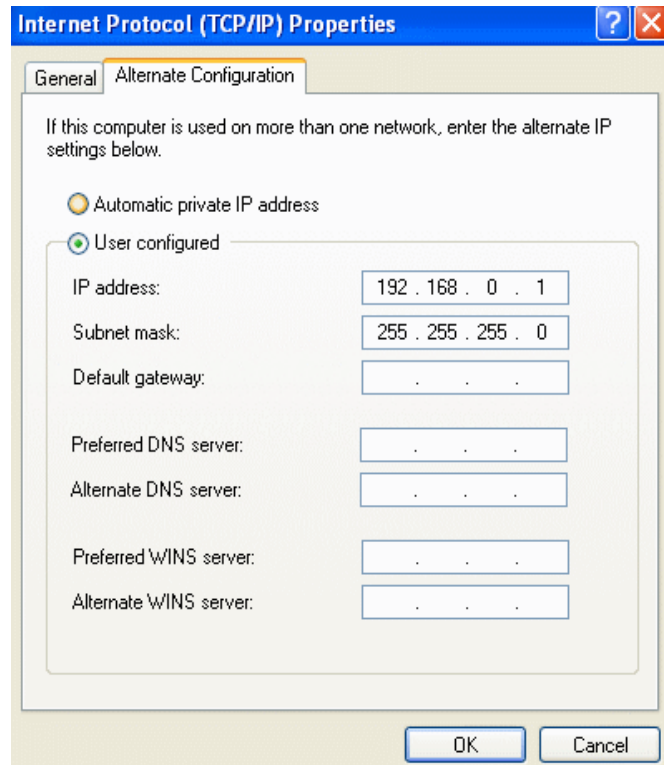


## IP Address

1. Select the Alternate Configuration tab on the Internet Protocol (TCP/IP) window.
2. Select the User Configured Button.
3. Enter the IP Address of 192.1683.0.1 The last digit can any number except the address of the Impact default setting of (128)
4. Enter the Subnet Mask of 255.255.255.0

# Finish

- Click OK out of Properties
- You are ready to connect to a new Impact



## Finish

1. Click on OK to close this window,
2. Click on close to close the Local Area Connection Properties window
3. Close the Network Connection window.

The PC is now setup to make a direct connection to an Impact Device

# The End



**The End**

This concludes training module 1A