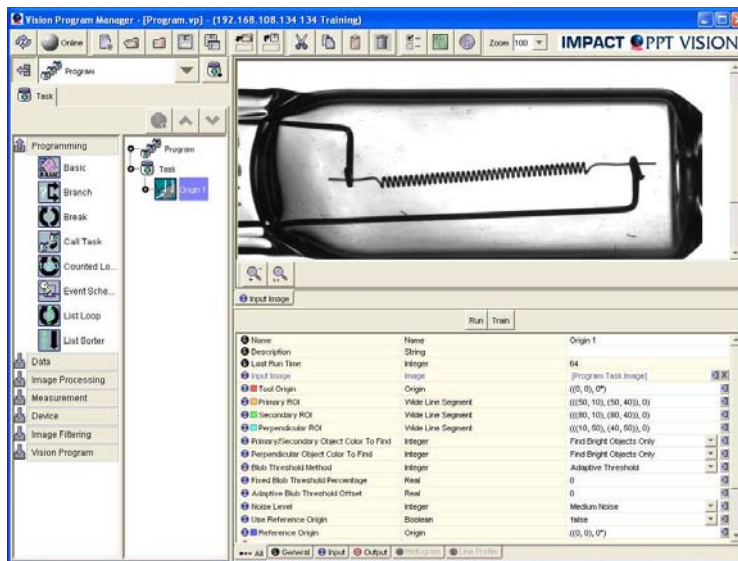


Introduction to VPM Navigation



This training module will cover the following

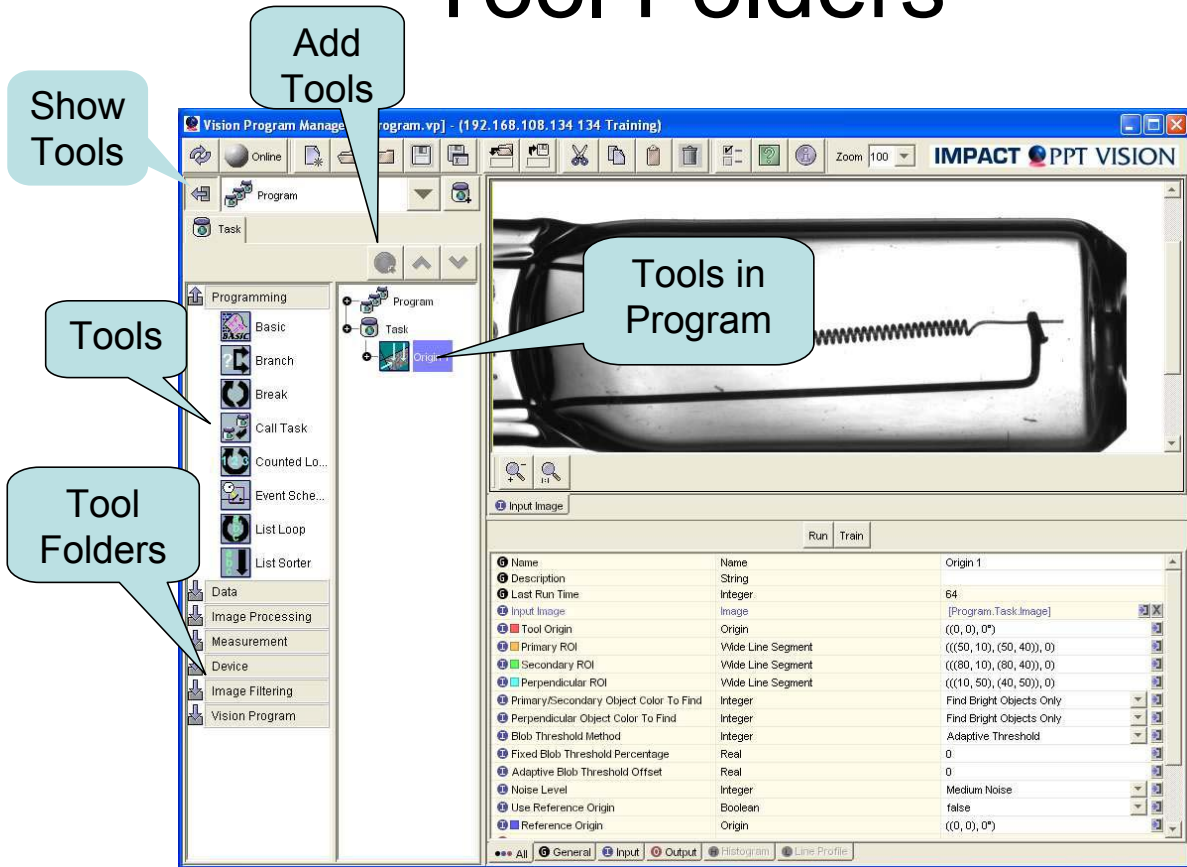
- Tool Folders
- Main Toolbar
- Vision Program Window
- Image Window
- Properties

Introduction to VPM Navigation

This training module will cover the following

- Tool Folders
- Main Toolbar
- Vision Program Window
- Image Window
- Properties

Tool Folders



Tool Folders

Show Tools ; This shows or hides the tool pallets.

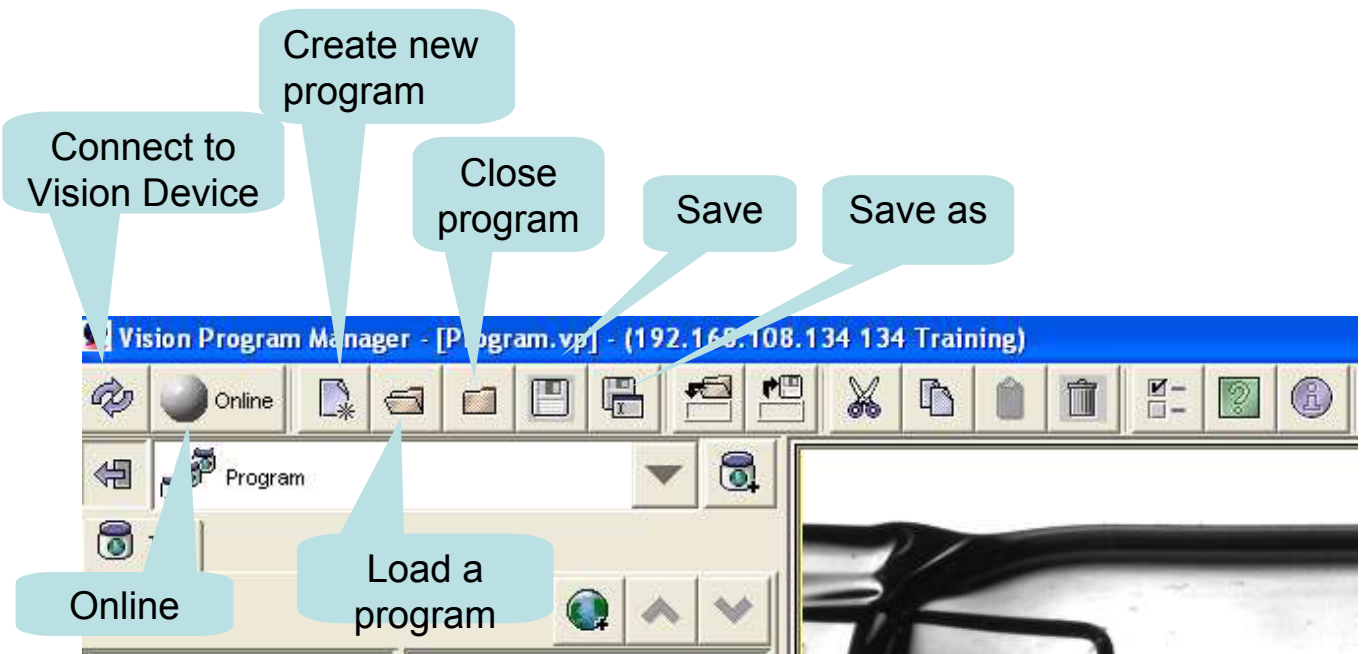
Tool Folders; Tools are grouped by types, click on group to expand and see Tools.

Tools; These are the available tools used to program an Inspection.

Add Tools; Click on add tool button to add the tool selected tool.

Tool in program; These are the tools in the inspection program

Tool Bar



Tool Bar

Connect to Device; this will bring up connection box to connect to Impact.

Online; This turns the Impact Online or Offline.

Create a new program; Use this to start building a new Inspection.

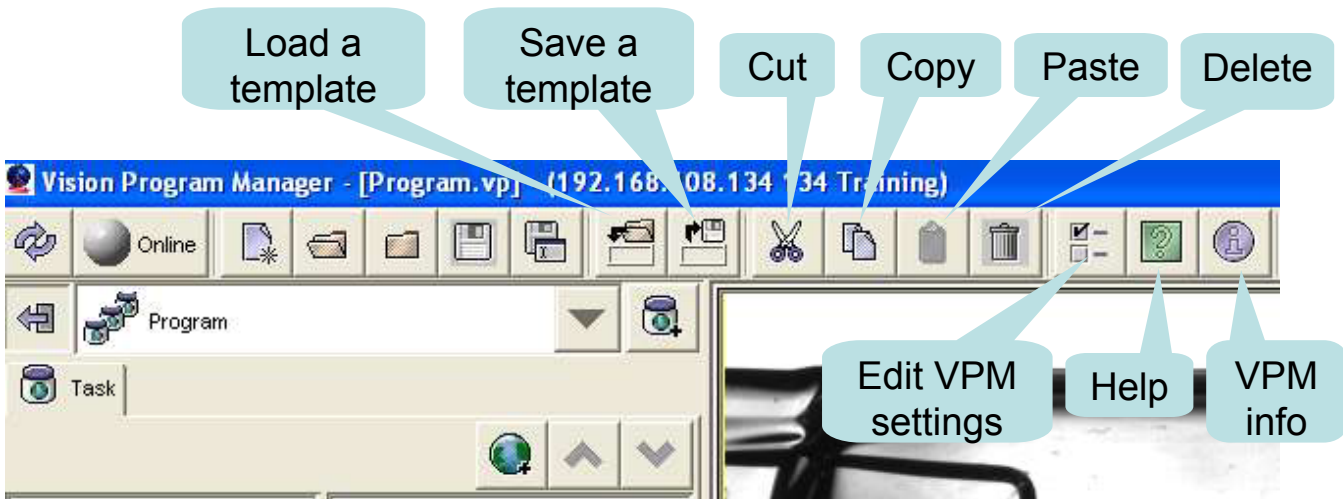
Load a program; This opens a saved Inspection program on the Impact.

Close Program; Use this to close the open program on the Impact.

Save; This saves changes to the file.

Save As; This saves the file with a new name.

Tool Bar



Tool Bar

Load a Template; This loads a group of saved tools into the program.

Save a Template; This saves selected tools as a template.

Cut; This removes a selected tool from the program.

Copy; This copies a selected tool.

Paste; This will paste a copied tool into the program.

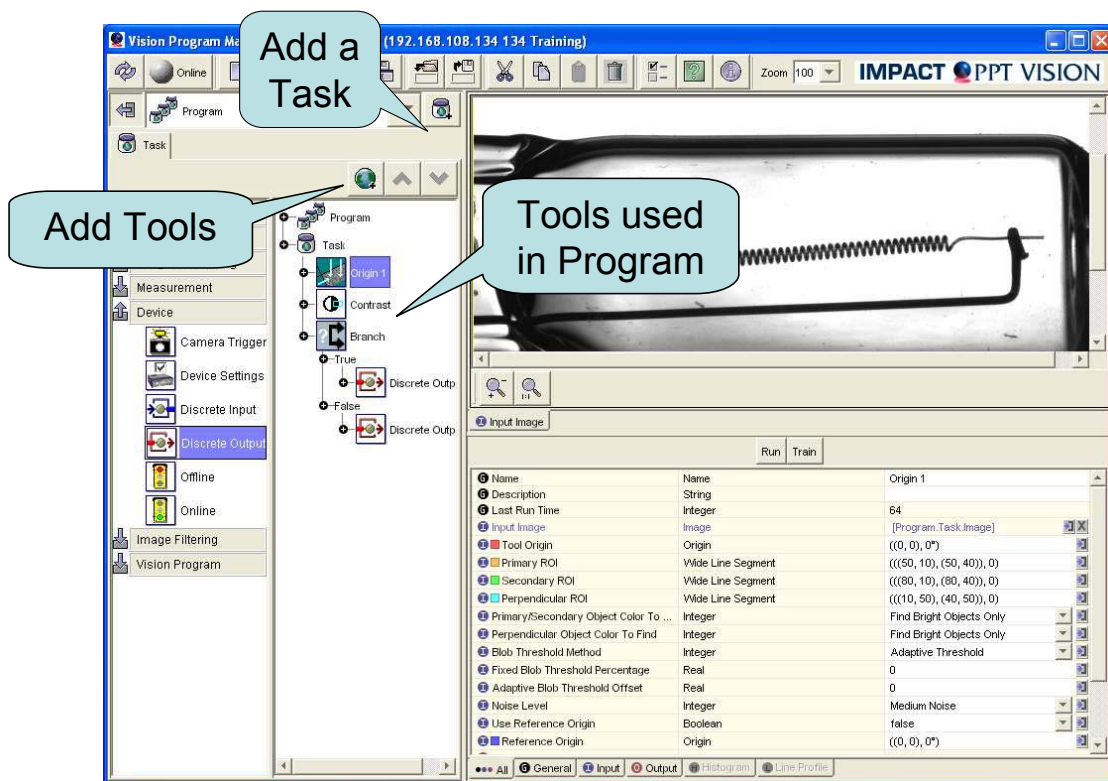
Delete; This removes a selected tool permanently.

Edit VPM Settings; This allows you to turn off the Auto select Image, Patch and Updates.

Help; Opens the help file.

VPM Info; This shows the version number of VPM.

Vision Program Window



Vision Program Window

Add Tools; Used to add new tools to the program.

Add a task; Used to add a new task window in the program.

Tools in Program; This shows the tools used in the program.

To add a Tool Follow these steps;

1. Select the tool to add from the tool pallet.
2. Select a tool in the task to add the new tool after it.
3. Click on the Add Tool button.

Image Window

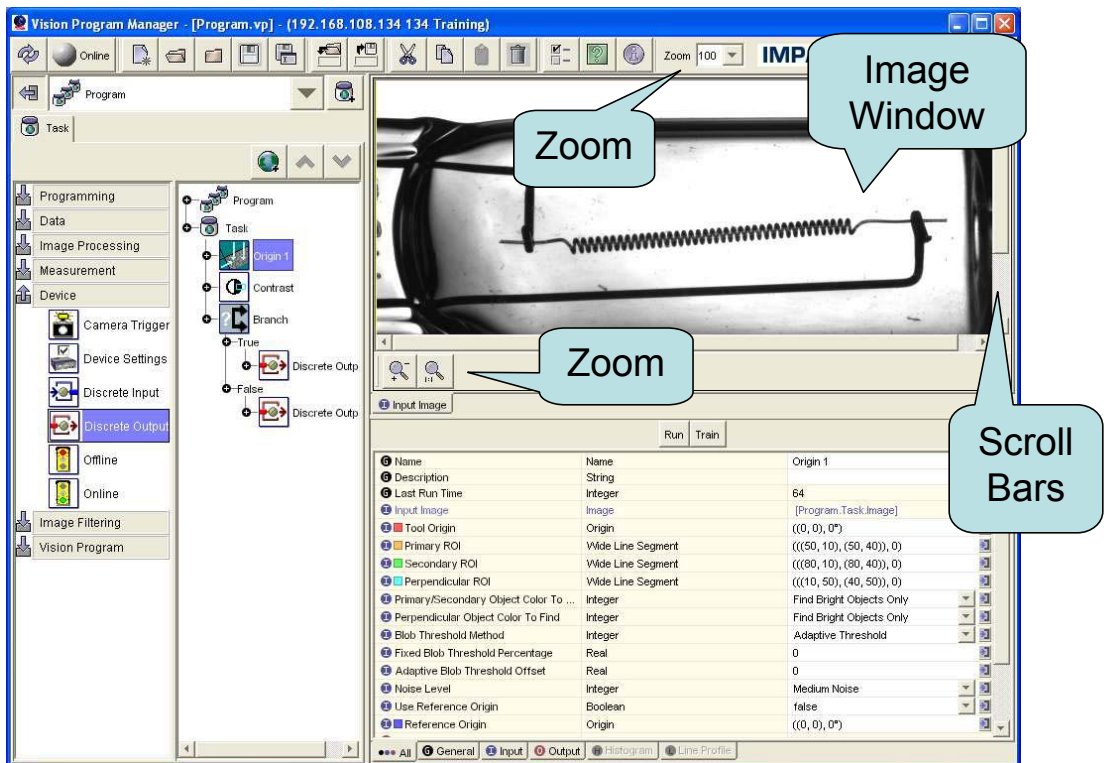
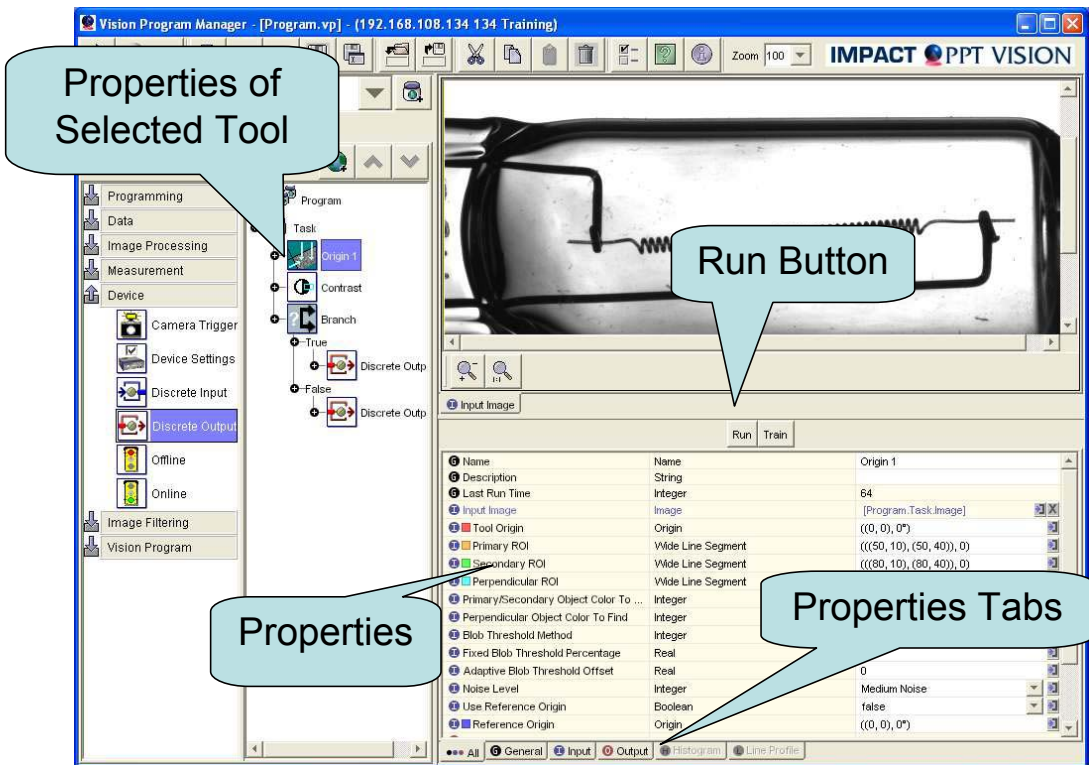


Image Window

The Image window shows the image from the camera or File Camera.

This Image can be zoomed in or out by using the zoom controls. You can scroll the image using the scroll bars on the bottom and right side of the image window.

Properties



Properties

To see the tool properties, select a tool in the program. Then select the properties tab on the bottom to view. The Properties are used to set up the tools and view results. The run button is used to run or test the tool on the current image you see in the image window.