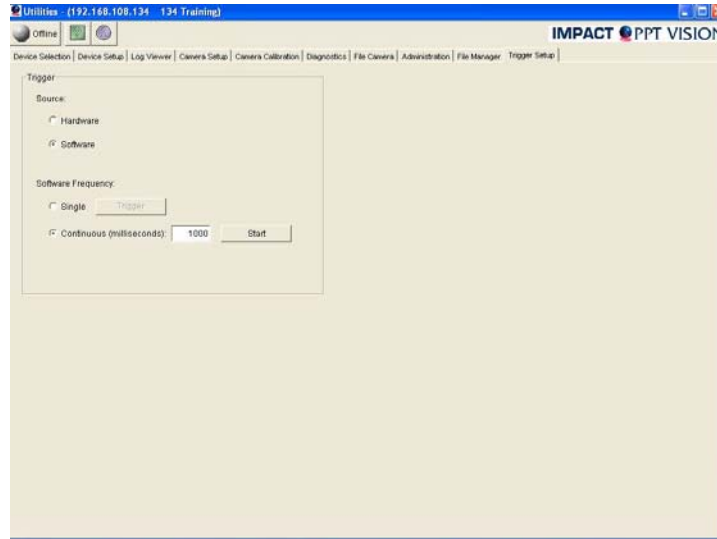


Software Triggering for Testing



This training module will cover the following

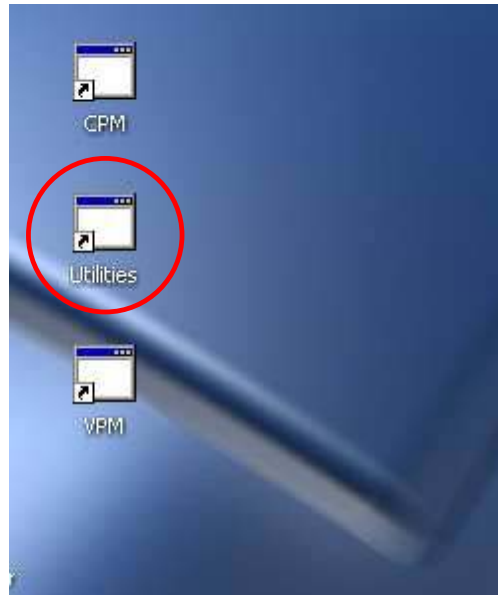
- How to Use Utilities to Trigger the Inspection for testing.

Software Triggering for testing

This training module will cover the following

How to Use Utilities to Trigger the Inspection for testing.

Open Utilities

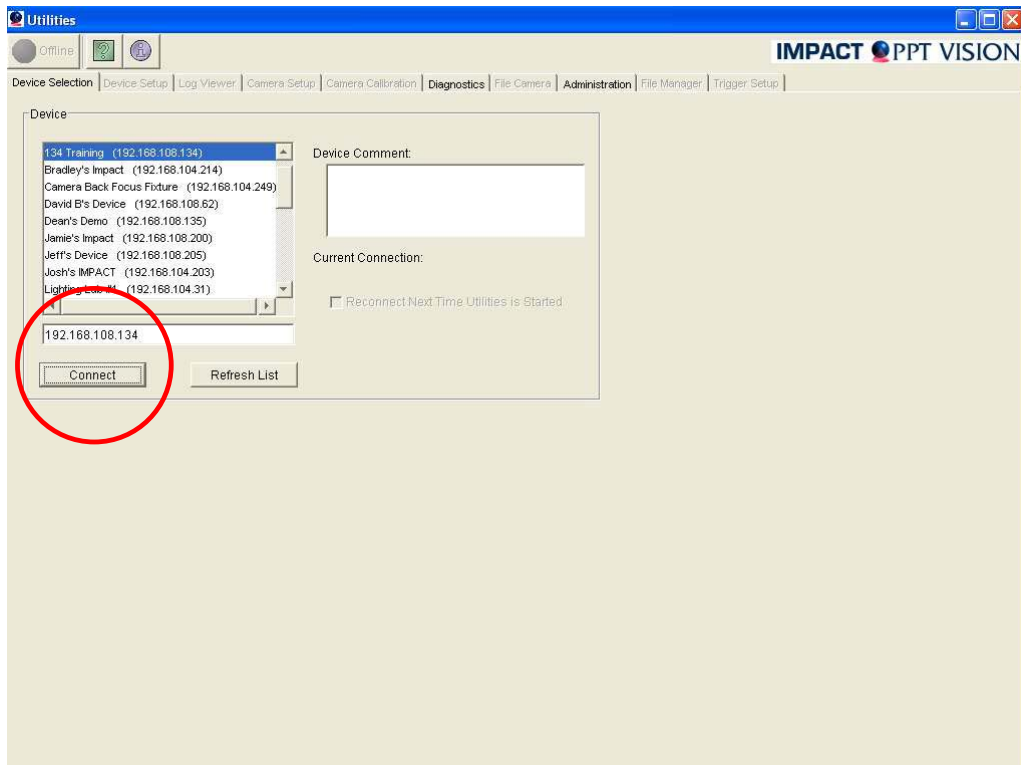


Open Utilities

Follow these steps to open Utilities

1. Go to your Desktop on your PC.
2. Double Click on the Utilities Icon.

Connect to Impact

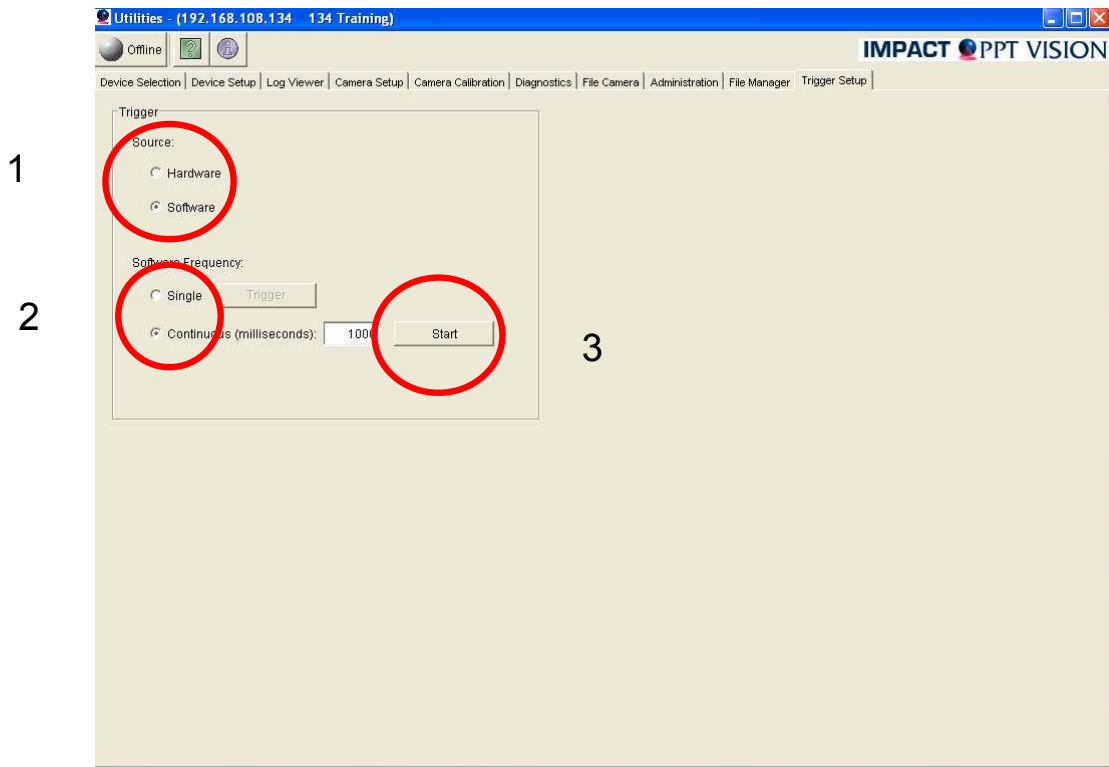


Connect to Impact

Follow these steps to connect to your Impact device.

1. Look in the Device box for your Impact IP address
2. Select your Impact Device
3. Click on the Connect Button.

Trigger Setup



Trigger setup

Software triggers are used to test your VPM Inspection program on the Impact. Every time you trigger the system, it runs the VPM program on the Image from the File Camera active RAM Images. The Software Frequency can be set to single or continuous. We will use continuous and the frequency can be set how fast you want it to trigger by changing the Milliseconds.

Follow these steps to start the triggers

1. Click on the Trigger Setup Tab
2. Select Software as the Source.
3. Select Continuous under software Frequency
4. Enter 1000 Milliseconds for the Frequency.
5. Click on the Start Button.
6. A software trigger will trigger the Impact device every 1 second.