

# Changing Impact IP Address



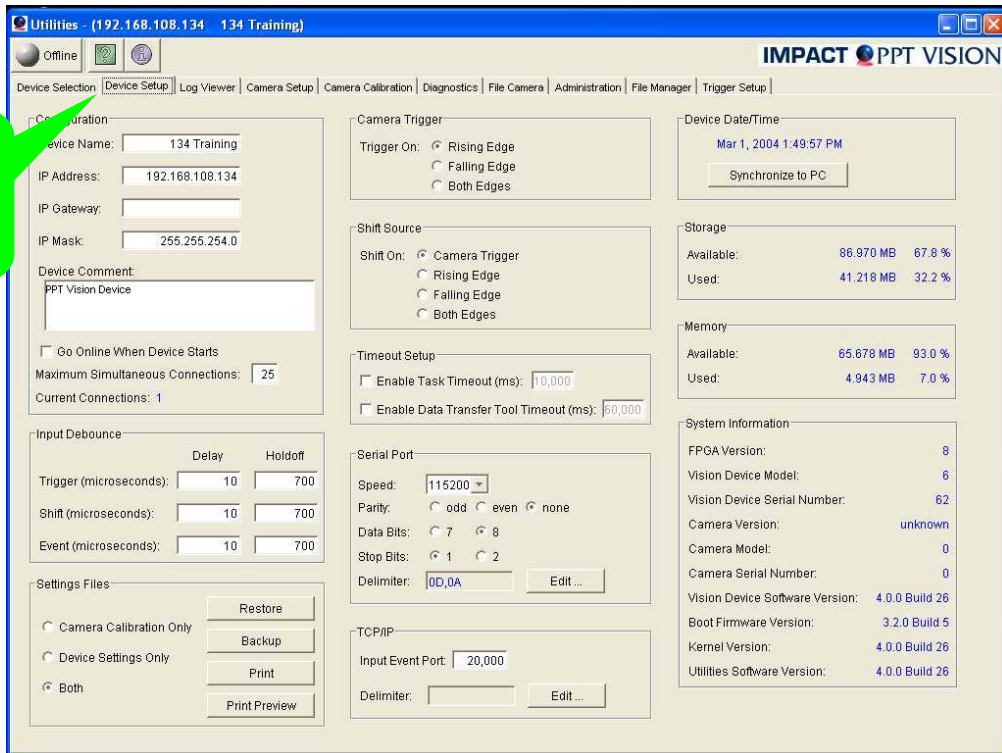
This training module will cover the following

- How to change the Impact IP Address

## **Changing the Impact IP Address**

The Purpose of this training is to demonstrate how to change a Impact IP address on the Impact hardware using Utilities.

# Open Utilities



## Utilities

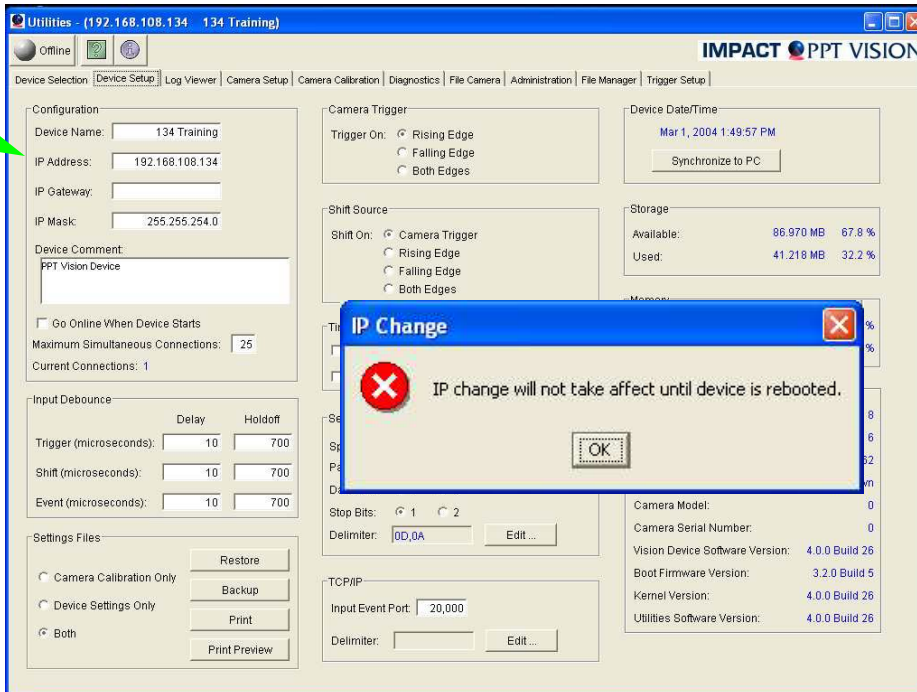
The IP address is setup in Utilities on the Device Setup tab.

Follow these steps to change the IP Address.

1. Open Utilities by double clicking on Utilities icon on desktop
2. Connect to device, select IP address and click on connect.
3. Click on the Device setup tab

# Device Setup

Enter new IP Address

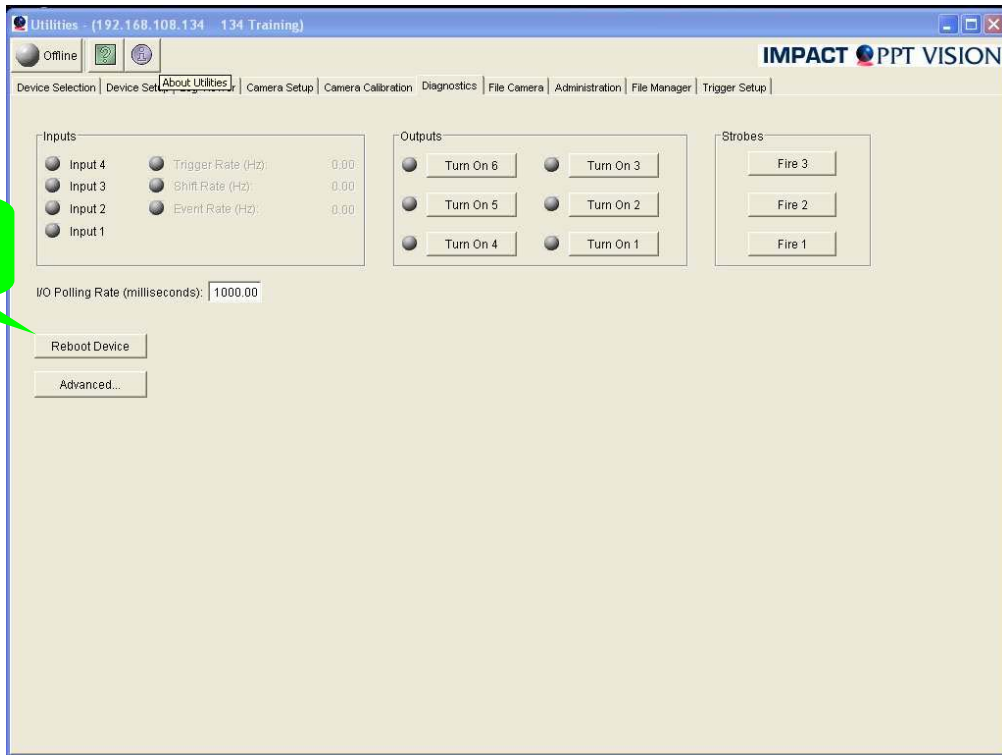


## Device Setup Tab

To change the IP Address, follow these steps

1. Enter new IP Address in the IP Address box.
2. The Device name and Comments fields can also be changed.
3. After you enter the new IP address, the Impact device will need to be rebooted before the changes will take effect.

# Reboot Impact



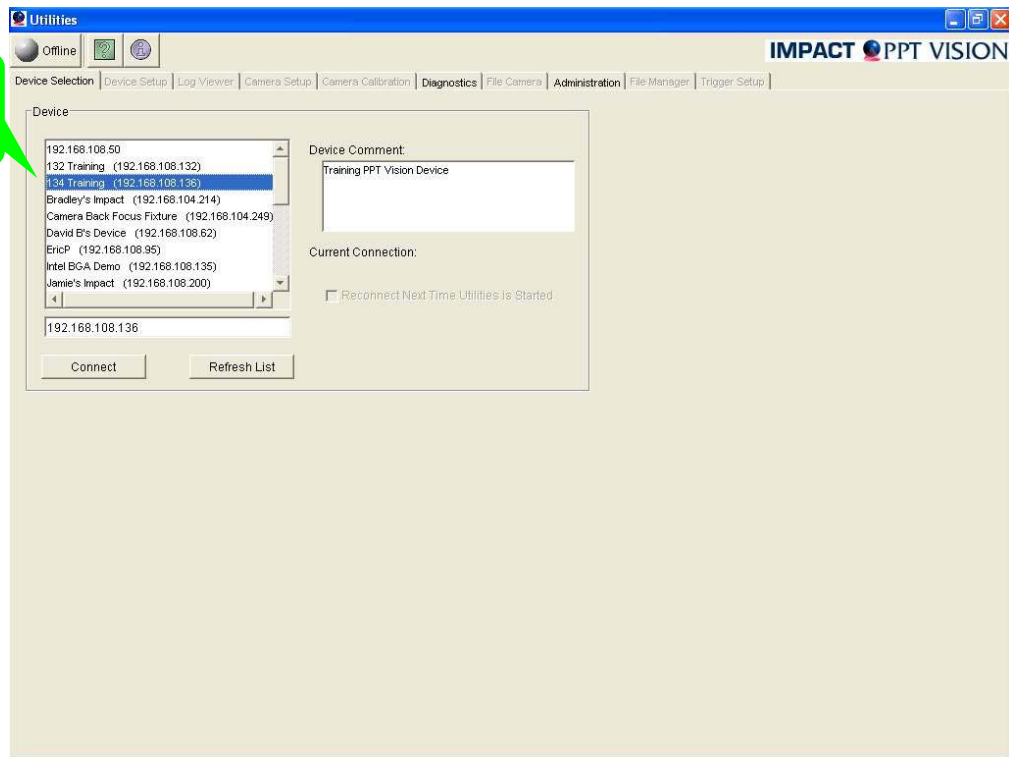
## Reboot Impact Device

The Impact Device must be rebooted for the changes to take effect. Follow these steps to reboot.

1. Click on the Diagnostics tab in Utilities.
2. Click on the Reboot Device button.
3. Connect to the new Impact IP address.

# Connect to new IP Address

New IP Address



Connect to New IP Address

After the Impact reboots, the new IP Address should show up in the devices listed in Utilities.