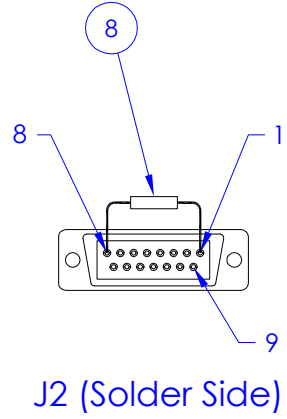
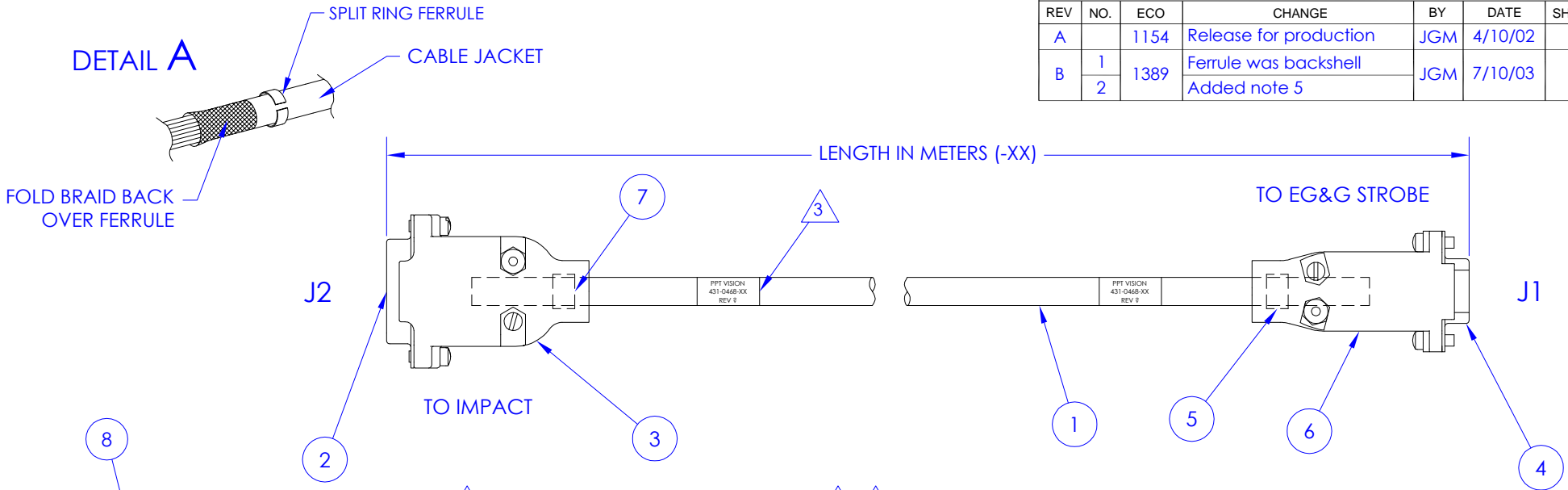
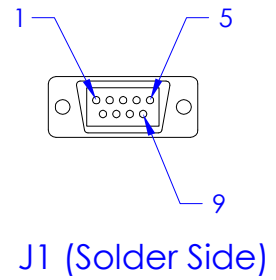


REV	NO.	ECO	CHANGE	BY	DATE	SHEET
A		1154	Release for production	JGM	4/10/02	
B	1	1389	Ferrule was backshell	JGM	7/10/03	
	2		Added note 5			



Connector J1 (Item 4) Backshell (Item 6) Ferrule (Item 5)	Resistor on J2 (Item 8)	Connector J2 (Item 2) Backshell (Item 3) Ferrule (Item 7)	Cable Wire Color -XX (Item 1)	Signal Name
	R1A	8		+12 VDC
	R1B	1		Strobe 1+
5		9	White	EG&G Trigger +
4		5	Black	EG&G Trigger -
		6, 7		Common, 24V Enable
(B1) Ferrule		Ferrule	Shield	Shield



- NOTES:
- ① See Detail A for assembly. Ferrule must fit into clamp recess to ensure strain relief.
 - ② Pins 6 and 7 are tied together on the connector for J2.
 - ③ Add labels on both ends of cable with "PPT VISION", part number and revision level.
 - ④ R1A and R1B are leads of resistor.
 - (B2) ⑤ Apply shrink tubing over all connections.

Tolerances .X XX XXX All angles ±2° Break all sharp corners unless noted	PPT VISION 12988 Valley View Road Eden Prairie, MN 55344	
	Cable Assy, Strobe Trigger, Impact to EG&G Strobe	
DRAWN J. Manias	B	431-0468-XX
DATE 3 Apr 02	SCALE 1:1	REV B
		SHEET 1 of 1