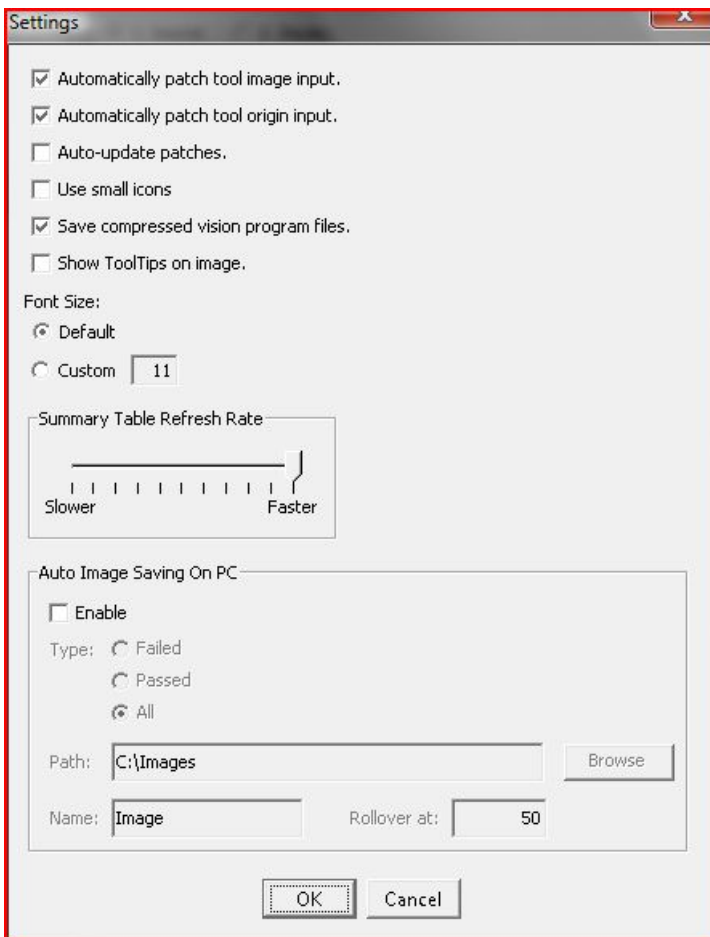


# Auto Saving Image on PC ability in VPM (version 7.4)

1. Images are saved when **Continuous Trigger** is selected **OR** the device is **Online** and getting triggers (while you are on the Design or Display tabs).
2. Click on the VPM Settings Icon (along the top of the VPM main toolbar):



3. The VPM Settings Window will open.



4. Auto Image Saving on PC Properties:

<p>Enable</p>	<p>If checked, and either the Design or Display tab is selected, VPM will save the selected type of image to the indicated path. Images are saved as a png file type. NOTE: You must also patch the task's Pass/Fail status on the Task display panel .</p>
<p>Type</p>	<p>Select the type of image you want VPM to save. Depending on the inspection speed and task processing time, some images may not be saved if saving them would delay the task.</p>
<p>Path</p>	<p>Enter a valid path to a folder where you want to save the images, or click Browse to find a folder. The IP address of the currently selected device will be appended to the path name and a folder will be created if it does not exist. The IP address directory name is NOT shown in the path field. For example, if you enter a path of c:\PPT VISION, the images will be saved in the folder c:/PPT VISION/192.168.108.65/</p>
<p>Name</p>	<p>This name, along with the image number count, will be used as the saved image's filename.</p>
<p>Rollover at</p>	<p>Previously saved images will be overwritten after this number of images have been saved.</p>