

# Application Note: Print Quality

## IMPACT Software Suite Information:

Software Version: 8.1

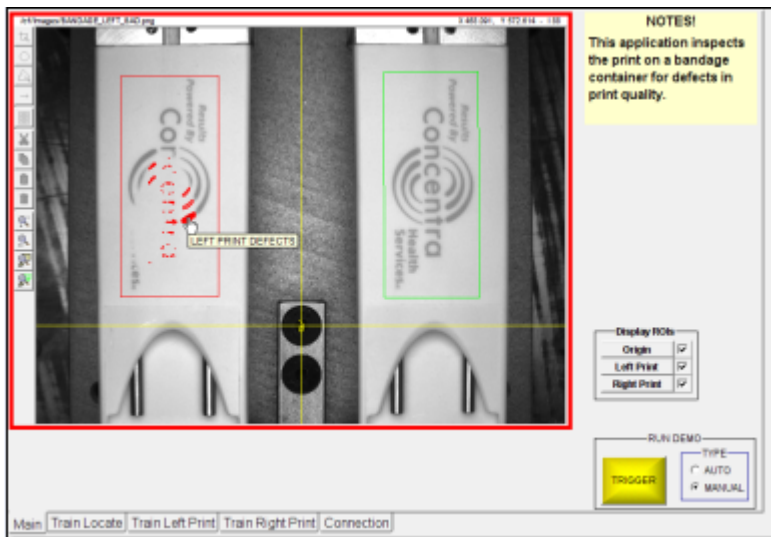
Files Included:  Images  VPM Program  CP Program

Others:

## Application:

Inspection of missing or extra ink on logo prints for a container used to package bandages.

Image Example(s):



## Lighting Used:

Unknown

## Lensing Used:

Unknown

## Tools Used:

1. Circle Gauge Tool; used to find the center of the presentation bracket. This X, and Y information is then shared with all tools below it that may need this location information.
2. Greyscale Template Tool; trained to a specific print pattern and background. This tool is enhanced with a blob algorithm to identify any anomalies (changes) in the print or background and display them. This tool is also available to be trained from its control panel.

3. Pass Fail Tool; three are used. Two to make a decision whether the left and right print passed or failed and one for a global pass fail.
4. Discrete Output Tools; four are used to tell the PLC to reject failing containers and keep passing containers. Two for each container.

Other Notes: