

Application Note: Automotive Rotor

IMPACT Software Suite Information:

Software Version: 8.1

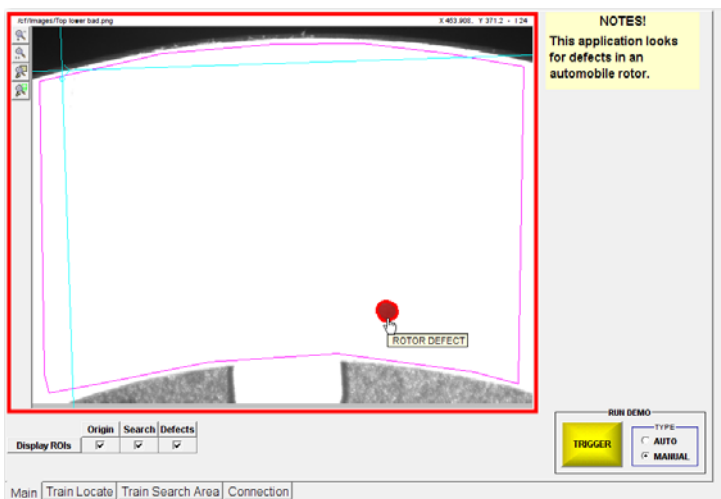
Files Included: Images VPM Program CP Program

Others:

Application:

Inspection of an automobile brake rotor for surface defects

Image Example(s):



Lighting Used:

Unknown

Lensing Used:

Unknown

Tools Used:

1. Origin Tool; used to find the edges of the brake rotor. This X, Y and Angle information is then shared with the Blob tool below it for correct ROI positioning. This tool is also available to be trained from its control panel.
2. Blob Tool; used to examine the brake rotor surface for and holes or chips. This tool is also available to be trained from its control panel.
3. Pass Fail Tool; used to make a decision based on the blob analysis of the rotor surface.
4. Discrete Output Tools; used to tell the PLC to reject failing brake rotors and keep passing brake rotors.